



# Style Italiano: Layers, The Complete Composite Course

**Jordi Manuata & Anna Salat**

June 8th - 10th 2018, Sydney

# Style Italiano: Layers, The Complete Composite Course

Jordi Manuata & Anna Salat

June 8th - 10th 2018, Sydney

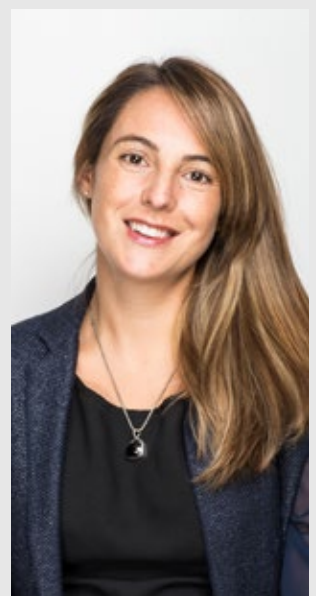
## Introduction

We have heard many times that highly aesthetic restorations need sophisticated and complex approaches, only reachable with the “gifted ones”. What if I tell you that it is possible to teach and repeat a feasible method that allows you to achieve perfect restorations with a high rate of success. Our approach allows you to do basically three things, rational colour matching, exact reproduction of the selected colour and the ability to distinguish and learn from eventual mistakes. Understanding material selection, layering technique and morphology management is mandatory for mimicking the slightest nuances in patient’s teeth, and this course will help you get out of those clinical difficulties with composite restorations.

## Overview

The main goal of this course is to teach the practitioner useful techniques that can be applied immediately after the course in their everyday dentistry to boost the quality of their work, especially regarding function and aesthetics.

- Become extremely effective in colour matching
- Master stratification of composite resins
- Dominate visual surface and morphology matching
- Learn how to make adhesive dentistry last



# Program

*Style Italiano: Layers, The Complete Composite Course*

## Day 1

### **The Secrets of Colour**

- Basic concepts of colour for beginners and experts
- Colour theory
- Commercial shades- advantages and disadvantages
- Industrial shade guides, product oriented
- Personalized shade guides, types and use
- Material phenomena, opacity, hue, chroma and value
- Stratification technique selection according to the colour obtained
- Is material selection important? Class IV restorations

### **Anterior Directs Class IV**

- Obtaining the perfect palatal index
- Cavity preparation
- Adhesive steps
- Matrix and wedging management
- Thickness control during stratification
- Enamel placement tips and tricks
- Morphology, luster and polishing
- Handling fractured teeth
- Corrections for anterior restorations
- Maintenance and long-term control

### **Stratification Bases**

Hands-on on how to obtain the perfect silicone bases for anterior stratification

- Obtain the perfect palatal index
- Stratification area determination
- Colour estimation
- Cavity prep and conditioning

### **Anterior Direct**

Hands-on on aesthetic class IV construction

- Palatal wall construction
- Proximal wall with an anatomical matrix
- Dentinal body thickness calibration
- Incisal Halo stratification
- Enamel Placement



## Day 2

### **Anterior Directs Class III and V**

- From the simple to the complex
- 3rd classes, colour and technique
- How to obtain a tight contact everytime
- Natural contour in proximal anteriors
- 5th classes the classical technique
- Colour and shape
- Cavity configuration
- Stratification technique
- The closing gap technique, suffer no more
- Hybrid cavities
- All of the above concepts applied in a clinical challenge

### **Anterior Directs, Diastema, Shape modification**

- The Diastema dilemma
- Two historical techniques for closing diastemas
- The front wing technique
- Other applications of the front wing
- Shape modifications
- Treating conoid teeth
- The single veneer challenge under another perspective

### **Diastema Restoration**

Hands-on on how to restore naturally diastema

- Colour estimation
- Front wing construction
- Proximal walls optimization before matrix
- Proximal walls with an anatomical matrix
- Backfilling
- Proximal finishing and polishing

### **Morphology and Shape**

Hands-on of finishing and polishing of both central and lateral

- Contour
- Primary anatomy
- Secondary anatomy
- Tertiary anatomy
- Smoothing phase
- Gloss phase

# Program

*Style Italiano: Layers, The Complete Composite Course*

## Day 3

### **Essential Lines**

- Modeling for the future materials
- Understanding anatomy from another point of view
- Rational use of Bulk fill materials
- Colour selection
- Essence of the anatomical features
- Instruments for perfect morphology
- Upper arch anatomy
- Lower arch anatomy

### **Essential Lines hands-on**

- The snow step technique
- Essential Lines UP
- Essential Lines Low

### **Posterior Direct**

- Repeatable, easy and a very refined stratification technique
- Composite contraction
- Pulp protection
- Trust your modeling
- Anatomy review
- Rational use of stains
- Matrices management
- Super contact achievement
- Custom ring technique
- Custom fit technique
- Stratification

### **Posterior Direct**

Hands-on on a posterior direct restoration

- Ultimate update on rings customization
- Matrix placement
- Adhesion
- Liner and base
- Essential lines applied to the 3D anatomy
- Finishing and polishing



Born in Mexico City, **Jordi Manauta** graduated with a degree in dentistry from the Technological University of Mexico (UNITEC) with major grants. He continued his postgraduate studies in operative and esthetic dentistry, earning a master's degree from the International University of Catalonia (UIC) in Barcelona, Spain. He has developed and currently is developing various materials and instruments for esthetic dentistry and photography in collaboration with international companies. He is a visiting lecturer in Seville, Siena, Marseille and Valencia universities and scientific consultant for two European journals. Dr. Manauta is a founding member of the Styleitaliano study group and author of 'Layers'(Quintessence 2012), 'Documentology'(in press) and 'Forma' (in press). He has also authored and co-authored many publications in international journals, and is frequently invited as a lecturer on these topics.

**Dr Anna Salat** Born in Barcelona, Dr Anna Salat graduated with a degree in dentistry from the International University of Catalonia (UIC) in Barcelona. She continued her postgraduate studies in implantology and esthetic dentistry, earning a master's degree from UIC. She is currently a visiting professor in Siena, Seville, Marseille and Valencia Universities. Dr. Salat is particularly interested in conservative dentistry and esthetic restorations and lectures internationally on these topics. She is a senior member of Styleitaliano. She has contributed articles to a number of international journals and also author of the book 'Layers'(Quintessence 2012)

## REGISTRATION

<http://www.dentaledglobal.com/courses>

Installment payments will incur an additional fee.

## WORKSHOP DATES

June 8th - 10th 2018

## TUITION FEE

\$AUD 4,100 plus GST



**Dental ED**  
www.dentaledglobal.com

## Dental ED Australia

449A Lygon Street, East Brunswick,  
Victoria, Australia 3057

P +61 3 8300 0719

FB DentalED Global

E support@dentaledglobal.com

W www.dentaledglobal.com

## VENUE LOCATION

Swissôtel Sydney  
68 Market St,  
Sydney NSW 2000  
Australia

