

Aesthetic Anterior and an Update on Posterior Bonded Restorations: Mastering Direct and Indirect Techniques



www.dentaledglobal.com



Pascal Magne
DMD, PHD

DR. PASCAL MAGNE is an Associate Professor with Tenure and the Don of the Sybil Harrington Foundation Chair of Esthetic Dentistry in the Division of Restorative Sciences, University of Southern California, Herman Ostrow School of Dentistry, Los Angeles, CA.

Dr. Magne is a recipient of multiple awards from the Swiss Science Foundation, the Swiss Foundation for Medical-Biological Grants, and was the recipient of the 2002 Young Investigator Award from the International Association for Dental Research as well as the 2007 and 2009 Judson C. Hickey Scientific Writing Award (for the best research article of the year published in the Journal of Prosthetic Dentistry). He is also the author of numerous clinical and research articles on aesthetic and adhesive dentistry and is an internationally known mentor and lecturer on these topics. Furthermore, Dr Magne authored the book Bonded Porcelain Restorations in the Anterior Dentition — A Biomimetic Approach which has been translated into twelve languages and is considered as one of the most outstanding books in the field of adhesive and aesthetic dentistry.

He is a founding member of the Academy of Biomimetic Dentistry and a mentor of the Bio-Emulation think-tank group. In 2012, he launched a revolutionary approach to the teaching of Dental Morphology, Function and Aesthetics (the 2D/3D/4D approach) for freshman students at the Herman Ostrow School of Dentistry of USC.

PAYMENT DETAILS

Register online www.dentaledglobal.com (COURSES)

or Direct Bank Transfer

Account Name: Dental ED Pty Ltd BSB: 013 374 Account Number: 4989 63559

Swift Code: ANZBAU3M (include swift code for international transfers) Please include your name and ref: Pascal.

or Fax Credit Card registration to +61 (3) 9386 4141

Lecture Program 17th & 18th Lecture and Workshop 17th -20th (Sold Out) **NEW Lecture and Workshop 15th - 18th**

Charge to: Mastercard Visa Card Number - - Expiry ___ / ___

Ful Name _____ Address _____

State _____ Postcode _____ Phone _____ Email _____

Dental ED Pty Ltd, PO BOX 2062 Lygon Street Nth, Brunswick East VIC 3057. Phone inquiries: +61 (3) 83000 719

VENUE LOCATION (2 Day lecture)

Australian National Maritime Museum

The Lighthouse Gallery

2 Murray Street Sydney NSW 2000

+61 (2) 9298 3777

www.anmm.gov.au



VENUE LOCATION 1(Workshop 19th -20th Sep)

ADA NSW Centre for Professional Development

71-73 Lithgow Street, Leonards NSW 2065

+61 (02) 8436 9959



VENUE LOCATION 2(Workshop 15th -16th Sep)

SIRONA

Unit 19/39 Herbet St

St Leonards NSW 2065

+61 2 9496 5100



www.dentaledglobal.com

Registration

2 Day Lecture Program

AUS \$1,250 + GST

4 Day Lecture and Hands-on Program

AUS \$8,500 + GST

PASCAL MAGNE



Aesthetic Anterior and an Update on Posterior Bonded Restorations: Mastering Direct and Indirect Techniques

TOTAL 28 CPD HOURS

NEW Workshop 15th - 18th
Lecture 17th-18th September 2015
Sydney Australia

Course Overview



Natural morphology and layering technique for direct composite resin restorations.
Update on indications, diagnostic approach, tooth preparation and luting of bonded porcelain restorations.
Update on bonded posterior restorations including CAD/CAM materials.



9 YEAR FOLLOW-UP OF TYPE III PORCELAIN VENEERS

2 Day Lecture Program: September 17th to 18th

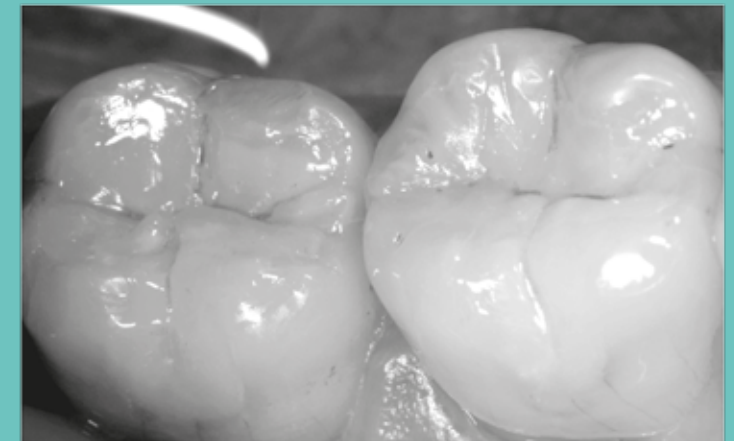
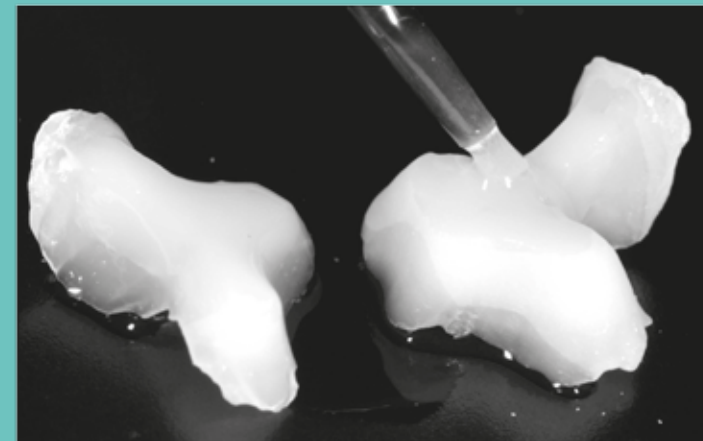
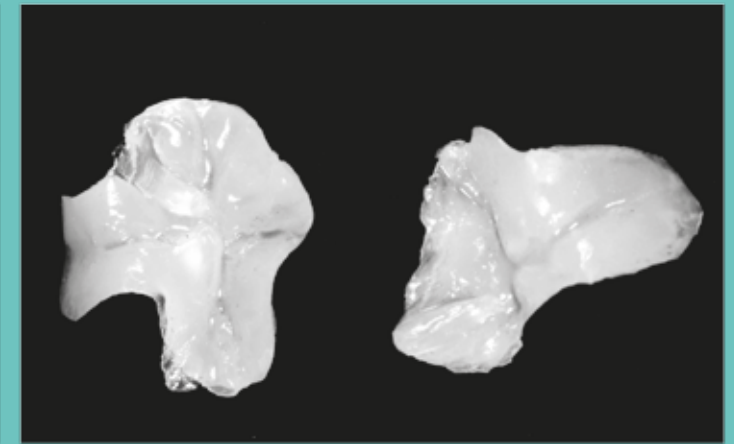
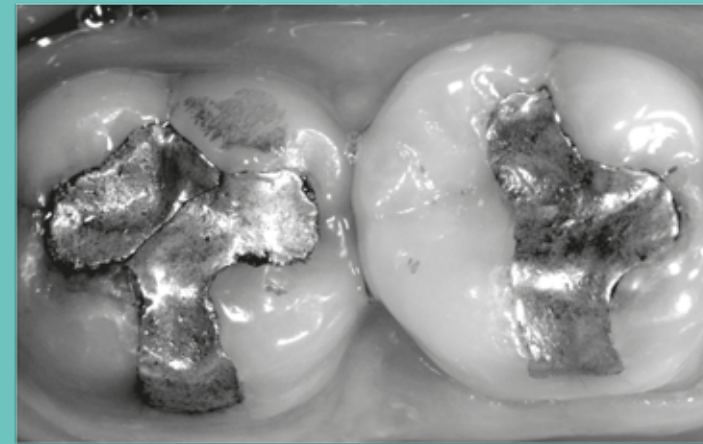
14 CPD HOURS

Reasons to attend this course

This course will be an intense lecture program for all practitioners wishing to upgrade their skills in anterior bonded restorations using direct composite resins and indirect porcelain veneers. An update on posterior bonded restoration will also be given during the last half-day. Although bonded ceramics seem to represent the ultimate biologic, functional, mechanical and aesthetic restoration for compromised anterior teeth, the number of ultraconservative treatment strategies and materials continues to grow. The practitioner is faced with many esthetic treatment modalities and products. The major disadvantage of this evolution is that it becomes increasingly difficult to make the appropriate choices in a given clinical situation. The availability of various treatment alternatives often allows for selection of an approach that conserves the maximum amount of intact tissue and which complies with the biomimetic principle. Treatment options should always first include the simplest procedures such as chemical treatments and freehand composites and then progress toward more sophisticated approaches such as laminate veneers and full coverage crowns only when required. The same dilemmas exist in the posterior dentition (direct vs. indirect) but it is this case that there is a growing indication for the use of semi-(in) direct CAD/CAM techniques, the advantages of which will be discussed and illustrated with clinical and research works.

Mimic natural beauty and morphology

What to expect: Determine which clinical situations can be addressed with ceramic veneering or can be approached with ultraconservative techniques, combining bleaching and direct application of composite resins. The course will review materials and step by step procedure in direct and indirect bonding, tooth preparation and luting procedure including CAD/CAM techniques in the posterior dentition.



Workshop: (NEW 15th & 16th Sept) (Sold Out 19th & 20th)

28 CPD HOURS

Aesthetic Posterior Restorations: Mastering Direct, Semi-(in) direct and Indirect Techniques

Reasons to attend this Hands-on Course

This course will be an intense lecture and hands-on experience for all practitioners wishing to upgrade their skills in posterior bonded restorations using direct, semi-(in) direct and indirect techniques.

The growing demand of patients for aesthetic or metal-free restorations, together with the ongoing interest of the dental profession for tissue-preserving materials have led to the development of posterior adhesive restorations. It is now clearly established that a new biomimetic approach to restorative dentistry is possible through the structured use of “tooth-like” restorative materials, such as composite resins and porcelain and the use of hard tissue bond, such as enamel and dentin bonding. Scientific studies and clinical evidence have validated the use of bonded tooth-coloured restorations. We have entered the “post-amalgam era”. This course will present the foundations of this evolution.

Discover the bonded approach to posterior restorations What to expect:

Based on maximum tissue preservation and the “biomimetic principle” (biomechanics) a model for the optimal use of current restorative systems will be presented using scientific evidence and clinical experience.

HANDS ON COURSE OUTLINE This very intense hands-on course emphasises on:

1. Fabrication of direct, semi-direct and indirect CAD/CAM restorations.
2. Advantages of bonded restorations over traditional approaches.
3. The biomimetic principle.
4. Dentin bonding protocol: rationale for an immediate dentin sealing protocol.
5. Preparation design; Principles of tooth preparation for bonded restorations.
6. Luting procedures for bonded restorations.
7. All about for composite restorations and layering techniques.
8. Preparation and fabrication of class II, and onlay restorations.